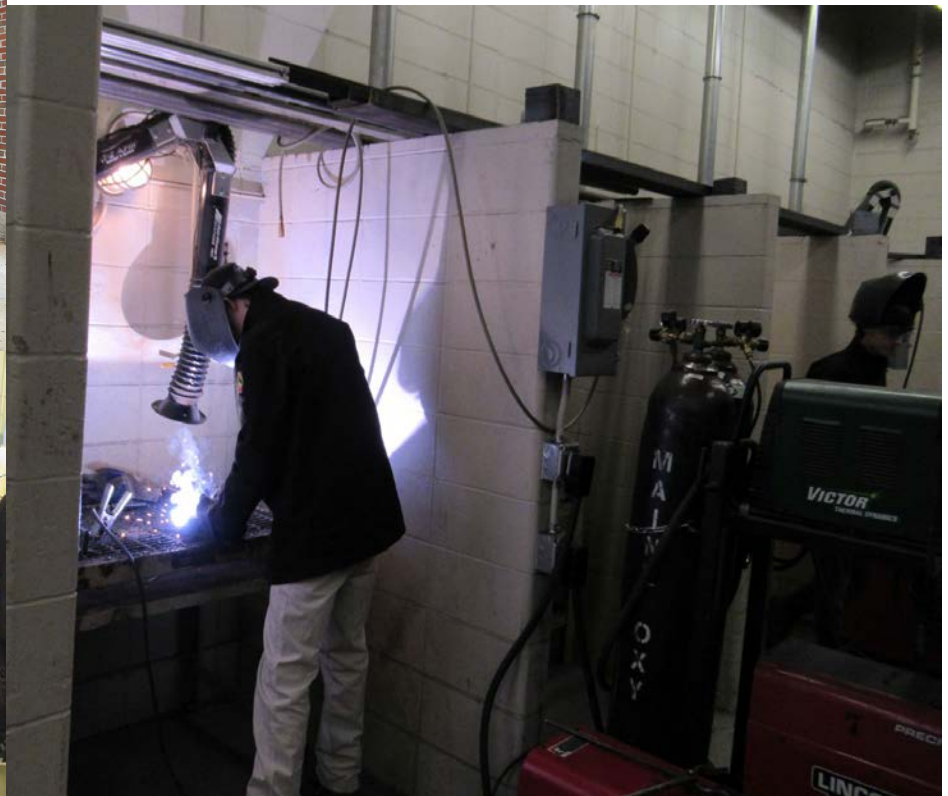




Wilbur H. Palmer
Career and Technical
Education Center

Welding Technology

Alvirne's Welding Technology program prepares students for entry level employment or further study in the fields of welding and fabrication. In this two-year program, students will learn arc, gas, brazing, MIG and TIG welding. The program also includes OSHA 10 safety training and certification.



Sample Occupations for Welding Tech. Graduates (Source: Bureau of Labor Statistics- Occupational Outlook Handbook)

Job Title	Projected Openings Through 2026	Average Salary
Welders, Cutters, Solderers, & Brazers	22,500	\$40,240
Sheet Metal Workers	12,000	\$47,990
Welding Engineers	400	\$94,610
Boilermakers	1,500	\$62,260

For More information: Contact your Local School Counselor OR

Wilbur H. Palmer CTE Center
@ Alvirne High School

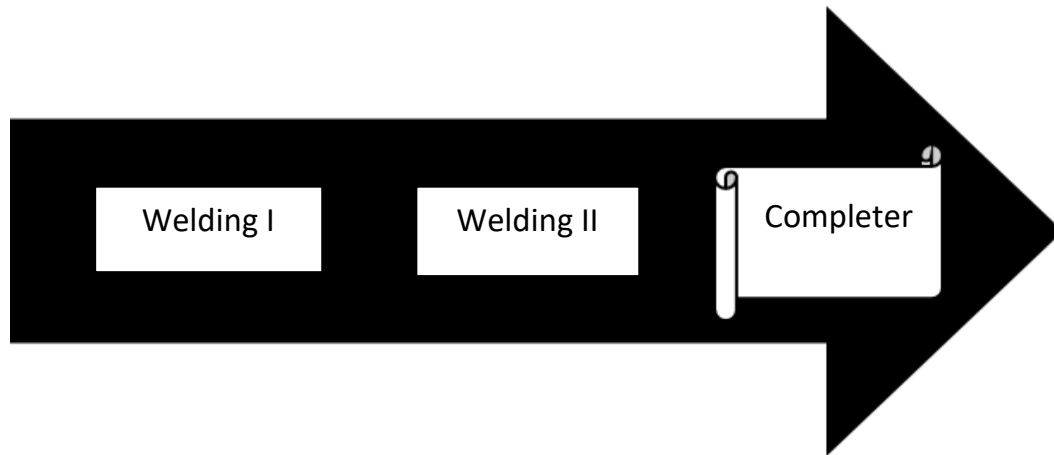
200 Derry Road

Hudson, NH 03051

tel.: 886-1260 x75010

web: <https://cte.sau81.org/>

Welding Technology Program Path



Course Descriptions

Welding I: *Grades 10-12; year-long course; CTE835*

Students will learn to arc weld in the flat position, utilize an oxy-acetylene torch for cutting metal and learn basic MIG skills. Through various exercises students will select the proper welding materials and demonstrate appropriate techniques. This course is useful for any student planning a career in the fields of mechanics, engineering, agriculture, construction, machine trades, or civil technology. Students **MUST** successfully complete all competencies to advance to Welding II. Grade 10 & 11 students will be given priority when scheduling.

Welding II: *Grades 10-12; year-long course; CTE837*

In year two of the welding program students will delve into advanced MIG, TIG, and stick welding skills. Using torch and plasma cutters students will develop their own self-directed projects to encourage growth of welding skills and to connect program contents to real life applications. Students will use oxy-fuel, shielded metal arc, metal inert gas, gas tungsten arc, gas metal arc, and plasma metal arc equipment to develop real-world skills in a controlled environment. Students will build partnerships with business and community members to help master skills. Students can earn their OSHA 10 Safety Certification.

***Prerequisites: Successful completion of Welding I**